

THE GREENHOUSE



1984 – 1993

No.48: During this period the parlour is home to Norwich CND, Green CND, Greenham Women's Network, East Anglian Anti-Nuclear Network, Stop PWR (Sizewell B), Consumers Against Nuclear Electricity, Friends of the Earth, SERA, Save the North Sea Campaign, Norwich Animals Charter, War on Want and Reforest The Earth.



30,000 copies of the Reforest The Earth handbook. Project develops into the UK Forests Network. Facilitating the Forest Stewardship Certification (FSC) system.

The ARK Flood Map



Modern Press with ' For Sale' sign

1993

Nine Norwich Art School and UEA graduates register the Greenhouse Trust as the UK's first Climate Change education Trust. The Trust sells charity/community shares in order to secure the deposit on the mortgage for 42-46 Bethel Street. The mortgage is further secured by a low-interest loan by Lord Joffe (then a Director of Oxfam) Former instructing solicitor to Nelson Mandela, Joel Joffe is chair of the Joffe Trust. The building is semi-derelict and the newly created charity. Emergency repairs to the roof are funded by a £10,000 grant from the Tudor Trust.



Top Floor Dormers

1994-6

Funding from numerous small charitable trusts enable the building to be stripped and the disability lift to the first floor, rain-water tanks and the infrastructure for future renewable technologies to be put in place.



Plaster being removed



Rebuild chimney and waterproof the roof



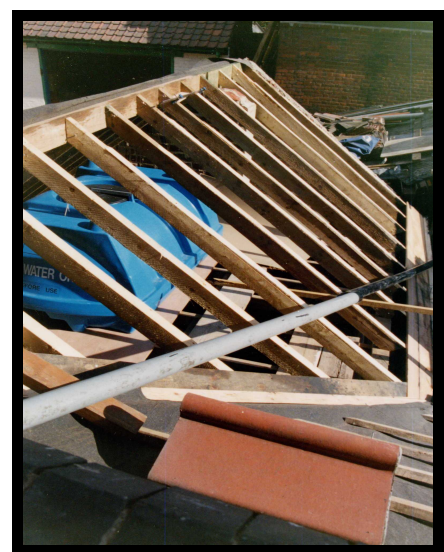
Staircase, joists, floors removed



New timber joist to all levels



Amongst the First FSC hardwoods (Callophyllum)

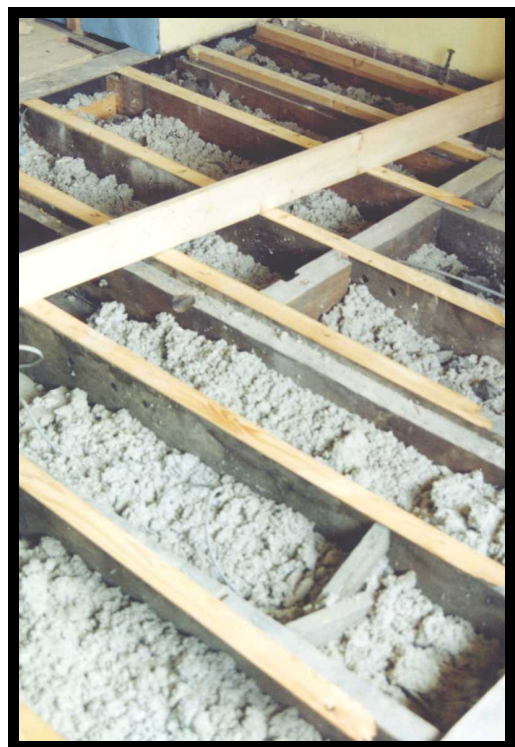
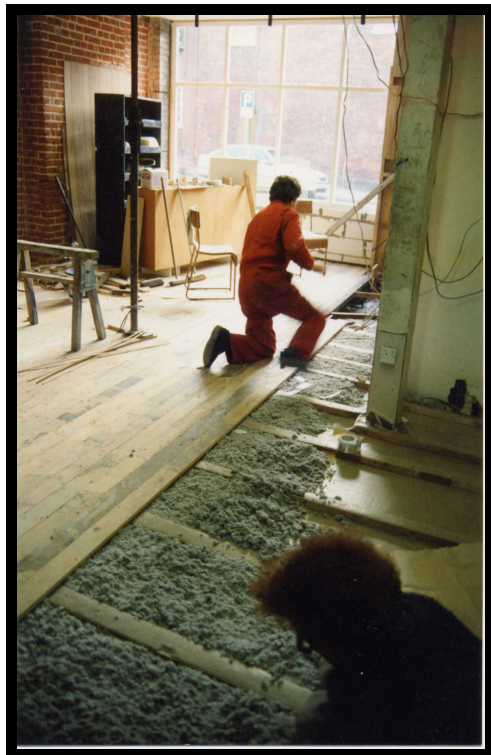


Rainwater tank above toilets



Reclaimed timber flooring for GMHP Office and ACT-UP Norwich

With approximately a third of the building usable as offices and campaign space. The Trust rents the offices to the Norwich Gay Men's Health Project and Norwich ACT UP. The Greenhouse launches its environmental information service, generating 600 enquiries in its first year. The service is one of six winners of the BT-WWF Partnership Awards for Environment in the Community.



Reclaimed timber flooring - Paper (low-embodied energy) insulation on all floors

Local building, scaffolding and timber companies add their support to the work and grants from the Paul Bassham Charitable Settlement, Percy Bilton Charity, C.A.F. John & Ruth Howard Charitable Trust, Polden-Puckham Charitable Foundation, Radley Trust and Stanley Smith Horticultural Trust add continuously to the Trusts ability to continue the renovation and services. The Helen Roll Charity funds the installation of the buildings fire-alarm system, which allows the Greenhouse to begin functioning as a public building.

The first exhibition in the new cafe



**Main staircase being installed
Wood donated by furniture makers**



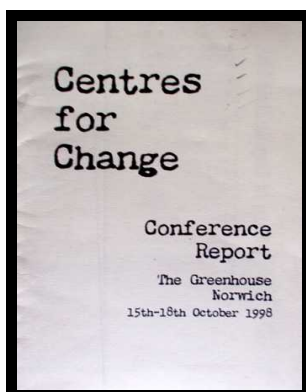
Paving the yard, dismantling the shed



New timber floor to with cork and rubber below for (noise and heat) insulation



Centres for Change Report



1997

The Environment Network and the Thomas Anguish Foundation provided funding for the first and second floors to be completely replaced. The Trust host the first national conference for environment and peace centres (Centres for Change). Two part-time workers funded by the National Lottery work with volunteers and agencies on a wide range of local projects including a major consumer conference on – Good Food.



Cork insulation for walls and secondary double glazing - Replastering



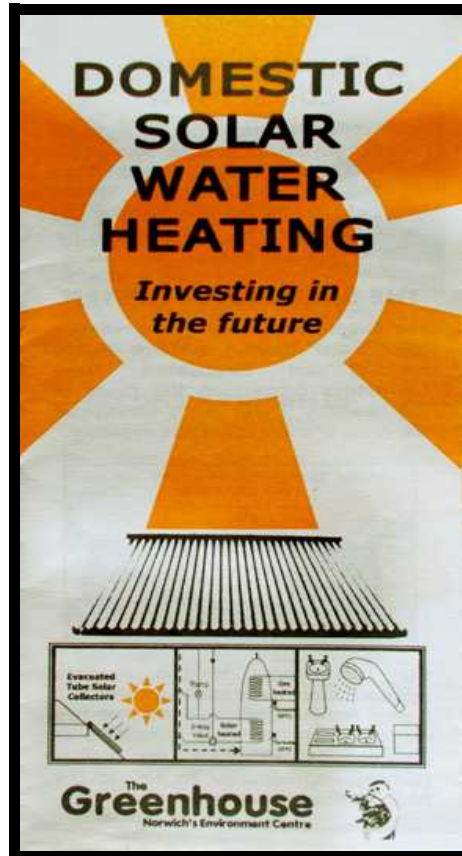
**Installation of lift
and furniture commissioned**

1998

Public donations enable the installation of a hot water solar system on the front (south facing) roof. This became the first renewable energy system on a public (and listed II*) building in Norfolk. The Esmee Fairbairn Trust provided a grant towards the Information Service and a number of short radio programmes for Radio Norfolk are made. The Greenhouse receives a grant from the Norwich - Town Close Estate charity, which enabled the Trust to commission furniture for the meeting room.



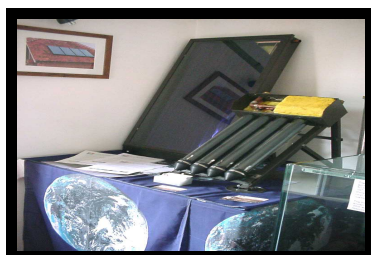
Solar tubes on 42-46 and 48

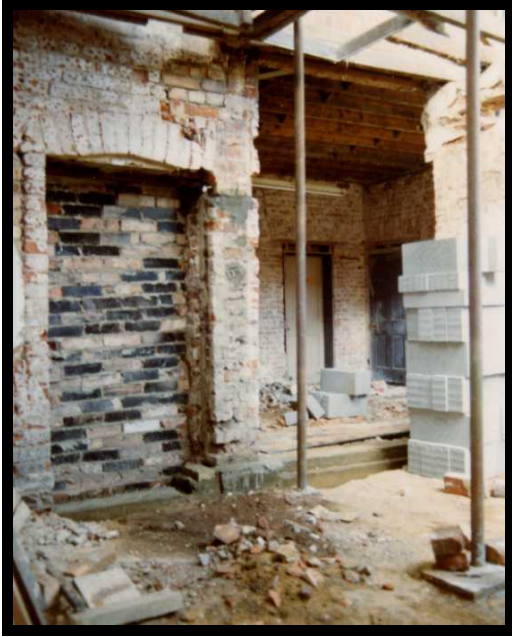


Public information - Promotion

1999

A grant from Eco-Power part funds the installation of a photo-voltaic electricity generating system. As with the solar hot water system, the installation of the technology is fiercely opposed by the planning department. This successful partnership with Eastern Energy allows the Trust to generate approximately 5-10% of its electricity needs and provided Eastern Energy with the opportunity to test a newly designed import/export meter in the building. Grants from the Jenny Wood, John Jarrold and the Mrs F BLaurence Trust add to the funds available to brief Councilors and develop our solar educational work





**Solar display and
The kitchen from the future toilet block**



**briefings for councillors
Eco-tricity design a prototype
import/export meter and fund
public information on energy,**

heat and insulation

2000



A grant from the Helen Roll charity made the installation of a kitchen and servery possible. With the previous planting of the organic garden taking hold the Cafe begins to attract regular users to it. The Company obtains a liquor license for the building as part of the development of the new organic and fair-trade café.

The cooker and kitchen fitted

The Thomas Anguish Foundation makes a grant to the Trust to enable the development of the educational resources available to visitors to the Greenhouse. An independent evaluation estimates that approximately 90 different community groups use the centre during the year and that 10,500+ people benefit from the services over a two year period of the evaluation. The shop Green City Central continues to develop its trading activities. Chairs made of many different local species, even the furniture has become educational!

During the year a major building Appeal is run to repay the mortgage/loan. With the support of the Marchioness of Worcester, George Monbiot and Lord and Lady Joffe the Appeal is a great success. Our Appeal patron sign up as ongoing supporters of the Trusts' work. David Hood, a keen Friend of the Greenhouse leaves the Trust a bequest,

which clears the debts on the building. The Trust is now able to focus its fundraising efforts on the running and development of educational services.



**Restoration of the cornices and installation of double glazing to new shop front
Marmolleum flooring with cork insulation below**

2002

The shop and café frontage is repaired and redecorated with a grant from the Helen Roll Trust. After nine years of hard work, involving more than a hundred volunteers, the restoration and conversion work is complete. The shop and café increasingly draw visitors to the building and increasing numbers of fundraising and education related events are added to our diary. A grant from the Tudor Trust enables us to improve the level of volunteer training and volunteering opportunities at the Greenhouse.

2003-4

A Lottery – Awards For All Grant, allows the Trust to improve the educational and training opportunities on offer at the Greenhouse and successfully publishes its third educational cookbook. With government funding, from the FundIT programme, the information in this booklet, along with other resources enable the launch of the Greenhouse website.



2005/06

**The Glass/Glass Photo-voltaics from underneath
Inverter in the store, with meter on display in toilet block**



Lobby and Parliamentary Briefing on the low carbon myths of Nuclear Power

Trust funding enabled the Greenhouse to complete the rainwater collection system at the Greenhouse. An appeal to increase the amount of electricity generated on site was launched. Designs for a garden roof, which would be made of glass laminated PV's (electricity generating) was launched. The roof is also designed to increase the roof area from which rain water can be collected. A grant from the Energy Saving Trust match funds the money raised towards the PV's and the system is installed during 2006.

The Polden Puckham charity enable the Greenhouse to co-ordinate a national lobby/briefing of MPs on the urgent need for increased investment in local energy systems and the need to end the UK's addiction to nuclear energy/weapons. Chaired by



**Ian Gibson MP. Chair of the
Parliamentary Briefing**



**Chernobyl - 20 -20 Lives
Norwich and London Exhibition**

With the Stern report raising the debate on the economic benefits of addressing climate change before crisis occurs, the Trust's educational work increases. Part of the educational work includes a travelling exhibition entitled 20 years 20 lives. The launch of this exhibition of photos of 20 people, from all walks of life across Europe affected by the nuclear catastrophe at Chernobyl takes place consecutively in City Hall (London) and the Greenhouse in Norwich. Three set of the exhibition then spend the year travelling around the UK (coordinated by the Chernobyl Children's Project), and the regions Libraries.

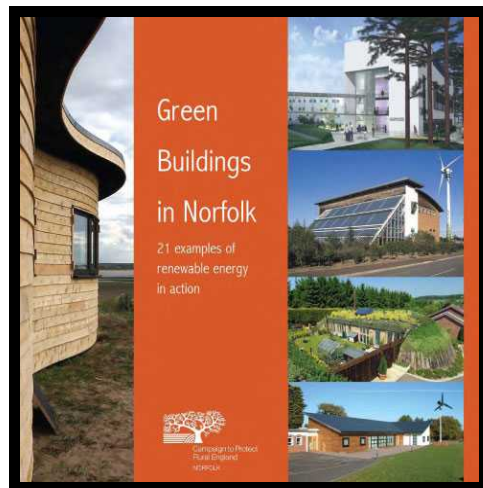


20 Years – 20 Lives Exhibition 2007/08

The Norfolk branch of the Campaign to Protect Rural England (CPRE) are tenants of the Greenhouse Trust. They publish 'Green Buildings in Norfolk, 21 examples of renewable energy in action'. The Greenhouse is included in the booklet and during the UK's Heritage Open Days, the Greenhouse offers a limited number of guided tours. In 2008, the Energy Savings Trust assist CPRE in expanding the number of tours on offer to the public. In conjunction with these activities the Trust opens the building for four days and publishes a set of information sheets to provide the thousands of visitors using the building. The Greenhouse hosts a presentation to the Lithuanian Ambassador in decentralised energy, funded by Greenpeace.



Greenhouse News - welcomes the Lithuanian Ambassador



CPRE's – Green Building Guide



Tours of the building

2009/10

Website re-launched with on-line information briefings and improved second-hand book store-front. 3rd year of 'Green building tours' Developed to include 'Future Heritage' Display & exhibition, with information workshops. 9th Fairtrade Fortnight event, as part of Trading Fairly' project.

The Greenhouse becomes a member of the Sustainable Energy Academies (SEA) 'Superhomes' Network and organised a second 'Future Heritage' exhibition as part of the National Heritage buildings week. A selection of historic buildings were updated 'virtually' to reveal how renewable energy technologies can be introduced into the most inefficient listed buildings. The public responded extremely positively to the idea, but the cities planners and politicians failed to grasp the challenge! The Age of Stupid was indeed the correct response to the climate change crises. From the release of the DVD in August, we undertook to distribute 200 copies to key decision makers across Norfolk.



The Greenhouse also organised the Social Environmental & Economic Sustainability (SEEing the Future) competition which involved Sprowston Community High School, The Norwich Academy, Notre Dame and Framingham Earl schools. The winning drawings, paintings and poems were placed on display in the Café and the Lord Mayor, Tom Dylan, handed out the awards in his Parlour during a tour of Norwich City Hall.

2011

Having raised £21,000 to install a pioneering array of glass PV laminates it became clear that this R&D technology had significant problems. Small hair-line cracks were allowing water to corrode the contacts between the crystals. The Trust negotiated with (Romag) the manufacturers and (Sundog) the installers and installed an 'of the shelf' replacement system. The new system qualified for the Feed In Tariff, assisting us in balancing the cost of the new system. It snowed whilst the system was being installed.



Just days before David Cameron's Government begin dismantling the Feed In Tariff. The Prime Minister's office asks if they can stage a conservative / election promotion in front of the new system.

The Stop Climate Chaos Coalition used office space and resources to co-ordinate a meeting with Norwich South MP (Simon Wright). Delegates from a wide range of organisations including, Oxfam, Greenpeace, Friends of the Earth, United Nations Association, Salvation Army, Norwich Women's Institute, Christian Aid, UNICEF, CPRE, RSPB and Norwich City Council put questions to our MP, prior to the COP 17 UN Convention on Climate Change in Durban. Local supporters made a virtual journey and raised £1,000 towards the lobby work.

Future Heritage exhibition and educational work around the poor insulation of Norwich houses, involved five Greenhouse volunteers being trained to deliver the Government funded 'save a tonne' campaign.



Organic wine tastings become our favourite community – educational activity.

